

DUZcart Scrubber Conversion Kit Manual

Updated October 2018

Kit Includes:

- (1) X-Power Scrubber Unit equipped with framing pieces
 - (8) "Drop-In" T-nuts
 - (8) Hex bolts
- (1) Power cable and plug
 - (1) Exhaust cap
 - (1) Pipe clamp
- (4) Black screws
- (1) Metal ring
- (1) Strip of velcro
 - Cable ties
 - Exhaust sock

Tools Needed:

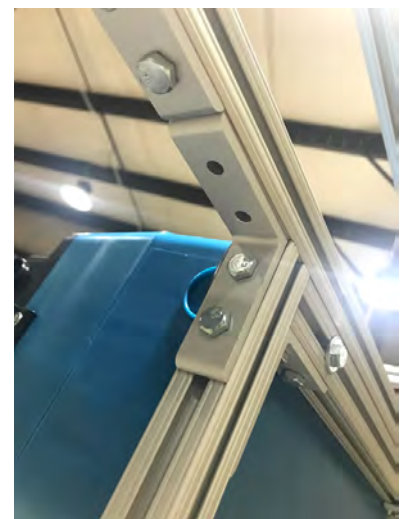
- Power drill
- Utility knife
- Rubber mallet

1. Lock the DUZcart wheels. Remove fabric cover from cart by gently pulling the bungee out of the grooves of the frame. Starting in a corner is recommended.

2. Insert (8) "Drop-In" T-nuts in the frame bars at the back end of the DUZcart (the side with the stationary casters)

- (4) on the top side of the base
- (4) on underside of the middle bar

3. Lift Scrubber Unit into place and connect using hex bolts and "Drop-In" T-nuts.



4. Drill 3/8" hole in the base (1/8" from edge of base) for the power cable and insert provided male plug outside the cart.

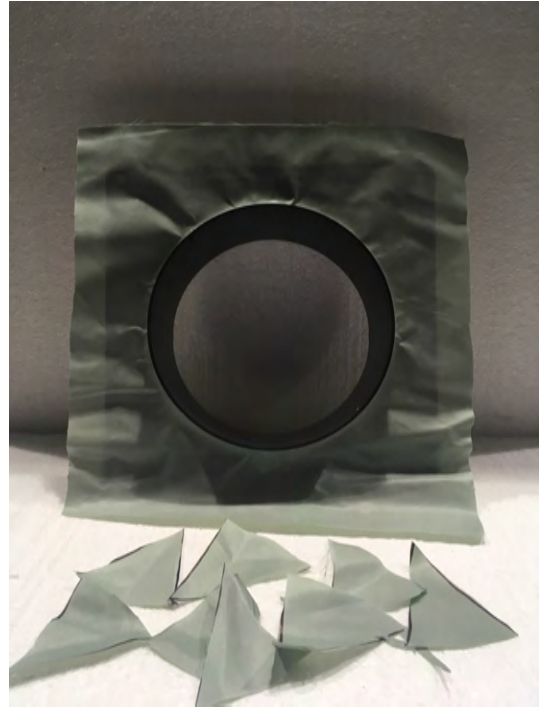


5. Recover cart by aligning bungee cords within the fabric in the frame and lightly tap with a rubber mallet. For additional instructions on replacing the cover, refer to the [DUZcart Cover Replacement Manual](#), page 11.

6. Using a utility knife, cut a star pattern into the cover where the 8" attachment extrudes.



7. Remove excess fabric and pull over the 8" attachment.



8. Place the black exhaust cap over the hole and fabric.



9. Use provided pipe clamp to tighten cap to the 8" attachment.



10. Drill (4) small holes around the cap (placed at 10, 2, 4 and 8 o'clock) through the exhaust cap and 8" attachment, and insert the provided black screws. Drill as close to the metal clamp as possible so the screw base rests on top of the clamp.



Step 10 continued:



11. Inside the cart, place the metal ring with foam into the 8" attachment, resting the non-foam side on the screws.



12. Insert the exhaust filter, making contact with the foam side of the ring.

Inside view



Outside view



13. Attach velcro around the filter to keep it in place.



14. Using the long cable ties, secure fabric exhaust "sock" to the 8" attachment and scrubber exhaust.



Your installation is now complete. Plug in the scrubber unit to test that unit is working and air is exiting the cart through the back filter.